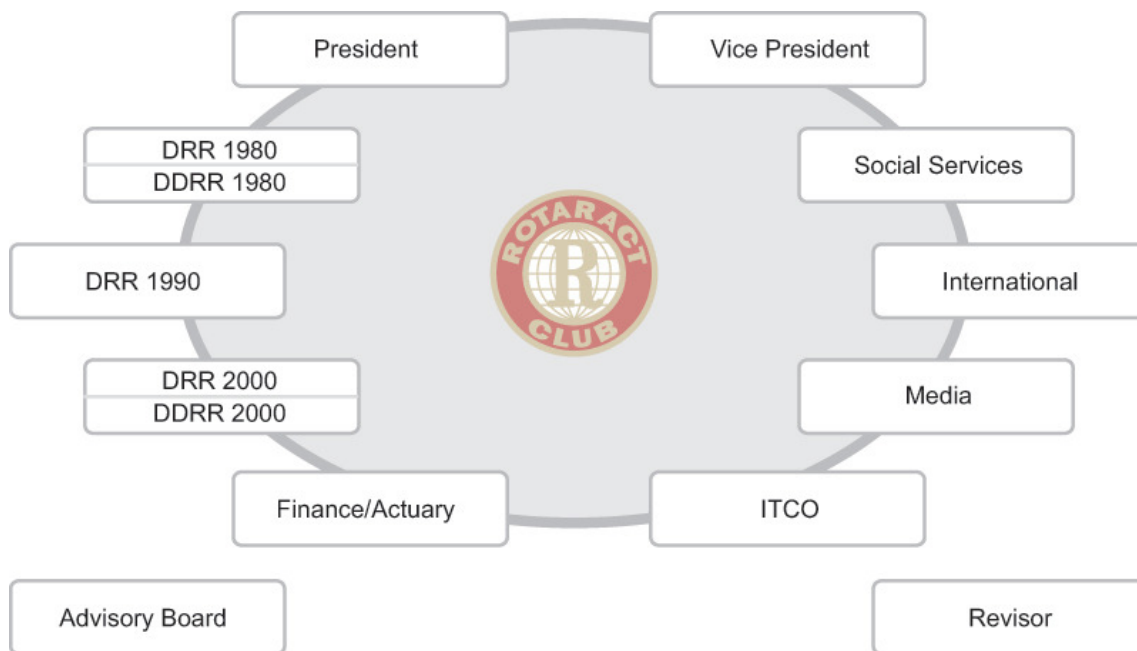


Committee Rotaract Switzerland/Liechtenstein (CRSL)



President

Remo Bütikofer
siehe / voir / vedi: Finance / Actuary

Social Services

Andreas Weber
andreas.weber@rotaract.ch

Media

Jonas M. Habich
jonas.habich@rotaract.ch

DRR 1980

Christoph Henzi
christoph.henzi@rotaract.ch

DDRR 1980

Carla Aeberhard
carla.aeberhard@rotaract.ch

Advisory Board

Logha L. Mantoe
logha.mantoe@rotaract.ch

Thomas Bachmann
thomas.bachmann@rotaract.ch

Romina Kazanciyan
romina.kazanciyan@rotaract.ch

Selina Sager
selina.sager@rotaract.ch

Vice President

Daniel Bättig
siehe / voir / vedi: IT/CO

Internet / Communication

Daniel Bättig
daniel.baettig@rotaract.ch

International

Cloé Bernier
cloe.bernier@rotaract.ch

DRR 1990

Demian Stettler
demian.stettler@rotaract.ch

DDRR 1990

Mélanie Bianchi
melanie.bianchi@rotaract.ch

Past President

Yvonne Müller
Yvonne.mueller@rotaract.ch

Finance / Actuary

Remo Bütikofer
remo.buetikofer@rotaract.ch

DRR 2000

Michael Schaffner
michael.schaffner@rotaract.ch

DDRR 2000

Victoria Hüppi
victoria.hueppi@rotaract.ch

Revisor

Thomas Bärtsch
thomas.baertsch@rotaract.ch

Bank Account

Rotaract Club Schweiz, PostFinance, Account No. 85-561705-7, IBAN CH76 0900 0000 8556 1705 7

Rotaract Clubs D 1980

RAC Basel
RAC Bellinzona
RAC Freiamt
RAC Lugano-Ceresio
RAC Luzern
RAC Mittelland
RAC Oberbaselbiet
RAC Sempachersee
RAC Zug
RAC Solothurn (in Gründung)

Rotaract Clubs D 1990

RAC Bern
RAC Genève
RAC Lausanne
RAC Neuchâtel
RAC Sion
RAC Biel-Bienne (in Gründung)

Rotaract Clubs D 2000

RAC Glarus
RAC Limmattal
RAC Meilen
RAC St. Gallen
RAC Winterthur
RAC Zürich
RAC Zürichsee
RAC Züri Oberland (in Gründung)