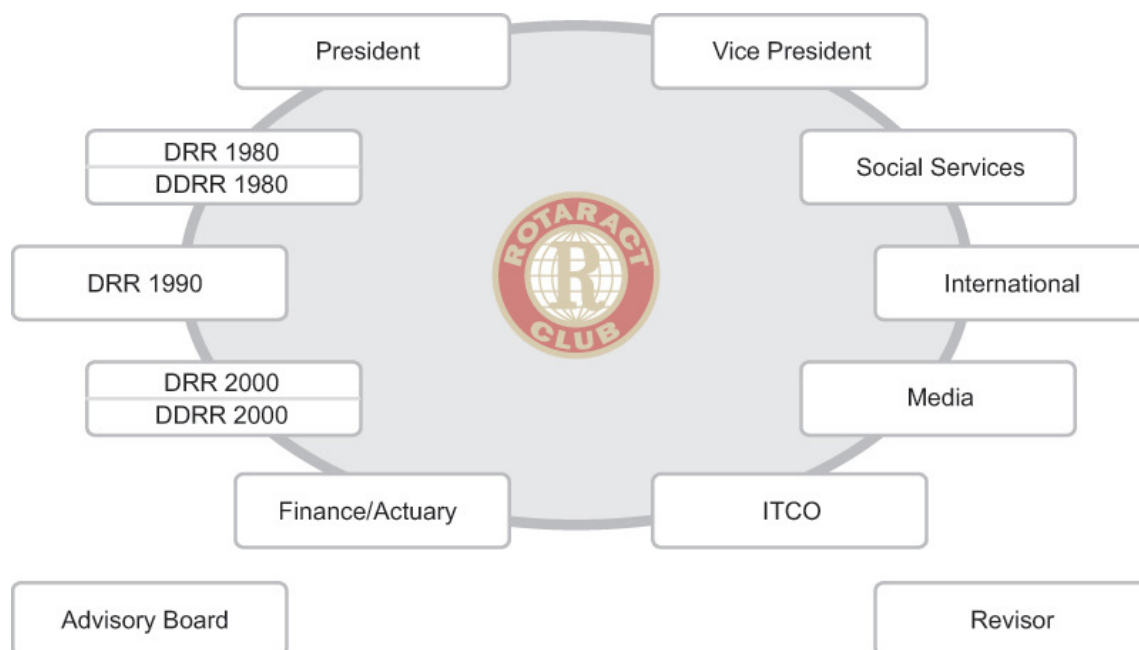


Committee Rotaract Switzerland/Liechtenstein (CRSL)



President

Yvonne Müller
siehe / voir / vedi: DDDR 1990

Social Services

Andreas Weber
E-Mail: andreas.weber@rotaract.ch

Media

Jonas M. Habich
E-Mail: jonas.habich@rotaract.ch

DRR 1980

Simone Staubli
E-Mail: simone.staubli@rotaract.ch

DDRR 1980

Christoph Henzi
E-Mail: christoph.henzi@rotaract.ch

Revisor

Thomas Bärtsch
E-Mail: thomas.baertsch@rotaract.ch

Vice President

Remo Bütikofer
siehe / voir / vedi: Finance / Actuary

Internet / Communication

Daniel Bättig
E-Mail: daniel.baettig@rotaract.ch

International

Carla Keller
E-Mail: carla.keller@rotaract.ch

DRR 1990

Demian Stettler
E-Mail: demian.stettler@rotaract.ch

DDRR 1990

Yvonne Müller
E-Mail: yvonne.mueller@rotaract.ch

Advisory Board

Logha L. Mantoe
E-Mail: logha.mantoe@rotaract.ch

Finance / Actuary

Remo Bütikofer
E-Mail: remo.buetikofer@rotaract.ch

DRR 2000

Victoria Hüppi
E-Mail: victoria.hueppi@rotaract.ch

DDRR 1990

Michael Schaffner
E-Mail: michael.schaffner@rotaract.ch

Thomas Bachmann

E-Mail: thomas.bachmann@rotaract.ch

Bank Account

Rotaract Club Schweiz, PostFinance, Account No. 85-561705-7, IBAN CH76 0900 0000 8556 1705 7

Rotaract Clubs D 1980

RAC Basel
RAC Bellinzona
RAC Freiamt
RAC Lugano-Ceresio
RAC Luzern
RAC Mittelland
RAC Oberbaselbiet
RAC Sempachersee
RAC Zug
RAC Solothurn (in Gründung)

Rotaract Clubs D 1990

RAC Bern
RAC Genève
RAC Lausanne
RAC Biel-Bienne (in Gründung)
RAC Neuchâtel
RAC Sion

Rotaract Clubs D 2000

RAC Glarus
RAC Meilen
RAC St. Gallen
RAC Winterthur
RAC Zürich
RAC Zürichsee
RAC Limmattal