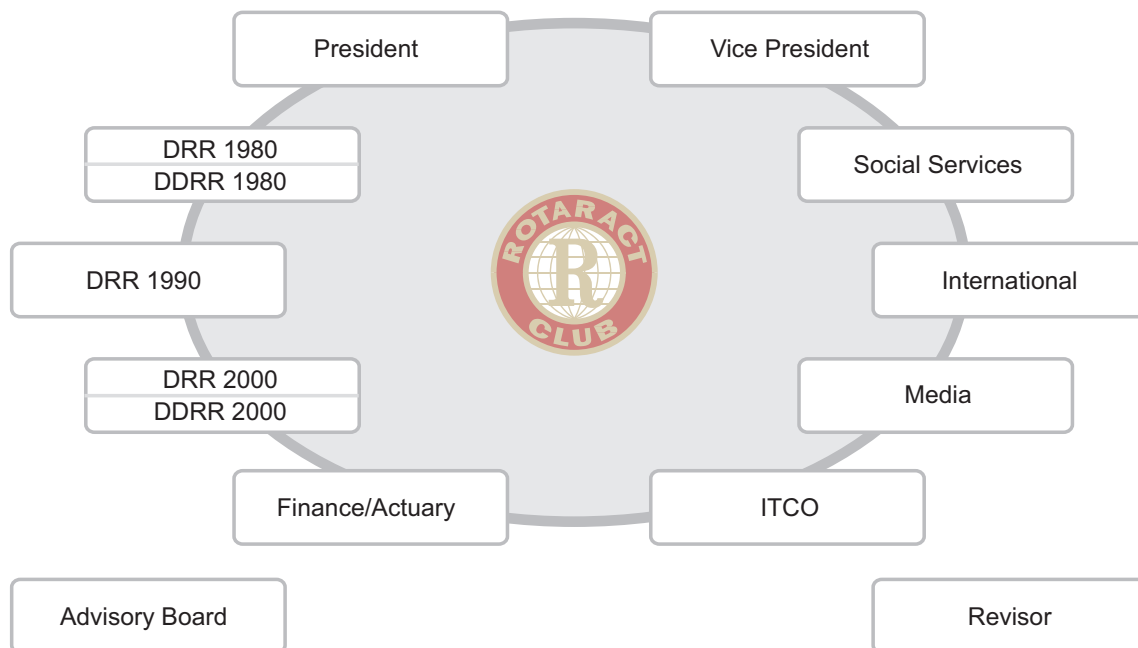


Committee Rotaract Switzerland/Liechtenstein (CRSL)



President

Selina Sager
siehe / voir / vedi: DRR 1980

Vice President

Martina Heiniger
siehe / voir / vedi: DRR 2000

Social Services

Franziska Sauter, RAC Bern
E-Mail: franziska.sauter@rotaract.ch

Internet / Communication

Maik Lustenberger, RAC Luzern
E-Mail: maik.lustenberger@rotaract.ch

Finance / Actuary

Markus Kalisch, RAC Meilen
E-Mail: markus.kalisch@rotaract.ch

Media

Yvonne Müller, RAC Zug
E-Mail: yvonne.mueller@rotaract.ch

Daniel Bättig, RAC Luzern
E-Mail: daniel.baettig@rotaract.ch

International

Carla Keller, RAC Zürichsee
E-Mail: carla.keller@rotaract.ch

DRR 1980

Selina Sager, RAC Mittelland
E-Mail: selina.sager@rotaract.ch

DRR 1990

Romina Kazanciyan, RAC Lausanne
E-Mail: romina.kazanciyan@rotaract.ch

DRR 2000

Sabine Schwarzwälder, RAC Winterthur
E-Mail: sabine.schwarzwaelder@rotaract.ch

DDRR 1980

Cristina Tosi, RAC Bellinzona
E-Mail: cristina.tosi@rotaract.ch

DDRR 2000

Martina Heiniger, RAC Zürichsee
E-Mail: martina.heiniger@rotaract.ch

Revisor

Thomas Bärtsch, RAC Glarus
E-Mail: thomas.baertsch@rotaract.ch

Advisory Board

Logha L. Mantoe, RC Zürich West
E-Mail: logha.mantoe@rotaract.ch

Thomas Bachmann, RAC Luzern
E-Mail: thomas.bachmann@rotaract.ch

Rotaract Clubs D 1980

RAC Basel
RAC Bellinzona
RAC Lugano-Ceresio
RAC Luzern
RAC Mittelland
RAC Sempachersee (in Gründung)
RAC Sottoceneri
RAC Zug

Rotaract Clubs D 1990

RAC Bern
RAC Genève
RAC Lausanne

Rotaract Clubs D 2000

RAC Glarus
RAC Limmattal (in Gründung)
RAC Meilen
RAC St. Gallen
RAC Winterthur
RAC Zürich
RAC Zürichsee